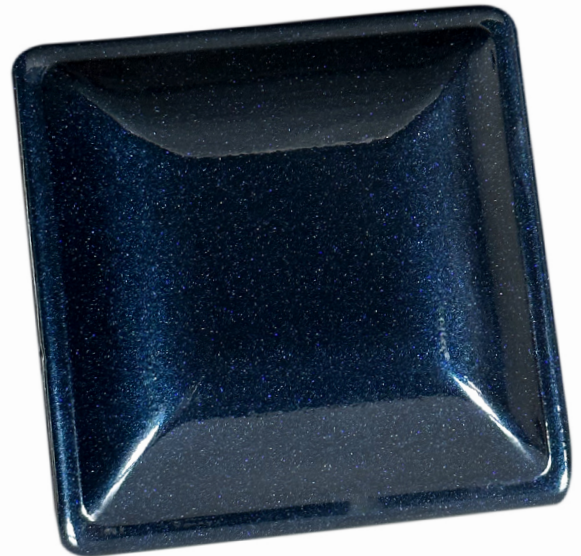


## GLACIAL LUSTER SHOTS013

Your imagination is your limitation, add Glacial Luster to your colors!

Works great with all powder paints and colors, especially darker and translucent colors! Add it to your clear coat for even more depth.

Just mix, shake, and paint!



### FEATURES:

- 5 grams per bottle
- Micron Size: 10-60µm
- Temperature Limit 400°F
- Recommended Pour: 1 shot per 1lb of solid color / 1 shot per 2lbs of clear coat
- Shot mixed with Super Mirror Clear & coated over Satin Black base

SCAN FOR  
MORE INFO



### APPLICATIONS:

- Wheels both aluminum and steel
- Gas tanks
- Engine components (other than headers)
- Motorcycle/bike frames
- Appliance fixtures
- Farm/outdoor equipment
- Outside furniture
- And more

### PURCHASE HIGHLIGHTS:

- Precise Measurements
- Lab Tested Formulation
- Easy Blending
- Convenient Packaging

Shop all quality coatings, equipment, and more at:  
[www.columbiacoatings.com](http://www.columbiacoatings.com)